

Petro Tech Seals

- ❖ Manufacturer of mechanical seals and seals components.
- ❖ Tungsten carbide
- ❖ Silicon carbide
- ❖ Carbon



Company
Profile



// About Us

Engineering corporates are the spine of any developing economy. We introduce ourselves as the large manufacturer and exporter of high pressure, high temperature, high speed mechanical seals and related components. The range and scope of mechanical seals manufactured at our end far exceeds any other seal manufacturer. We provide sealing solutions to the customers in the global industrial field.

Our Quality checks are the most stringent and minimizes any risk possibilities. Since its inception, we have been committed to provide our customers with highly reliable, high grade and high cost-effective mechanical seals products.



Vision:-

To become world class supplier of high grade seals all across the globe.





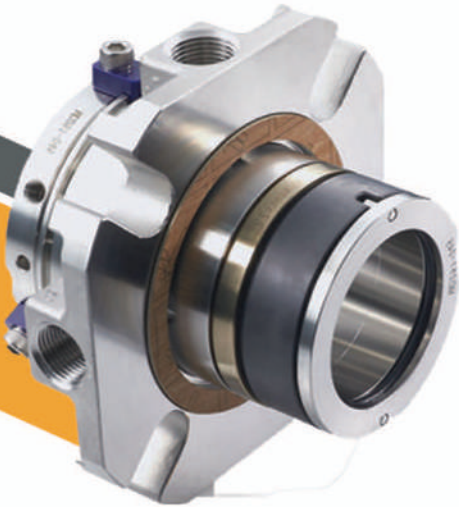
Mission:-

To create value products for our customers with use of high end technology.



BSI-50DMC

Cartridge Seals



Features

- Doubleseals
- Balanced
- Inside mounted

Advantages

SSI-50DMCCartridge seals are self-contained units consisting of a shaft sleeve, seal, and gland plate.

Operating Range

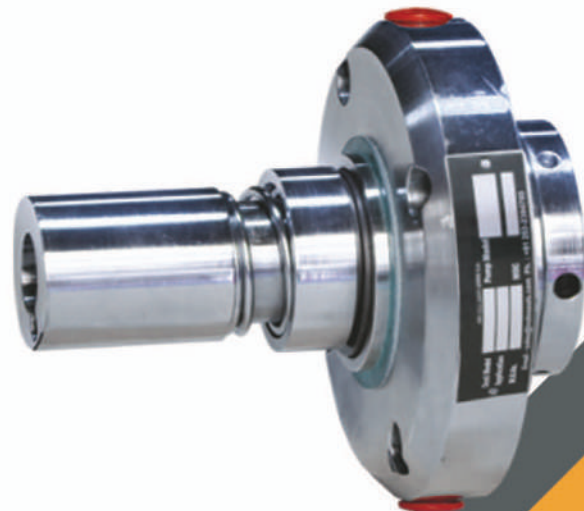
Shaft Dia.:	25 to 150mm
Pressure:	up to 15 Bars
Temperature:	50°C TO +180°C (-50°F ... 356)°F

Materials

Seal Faces:	Ceramic /Sic/Carbon Vs Ceramic /RB Sic./TC
Secondary Seals:	Viton/PTFE/GFT
Metal Components:	SS-316

Recommended Applications

- Process industry
- Chemical industry
- Petrochemicals industry
- Pumps
- Special rotating equipment



Cartridge Seals

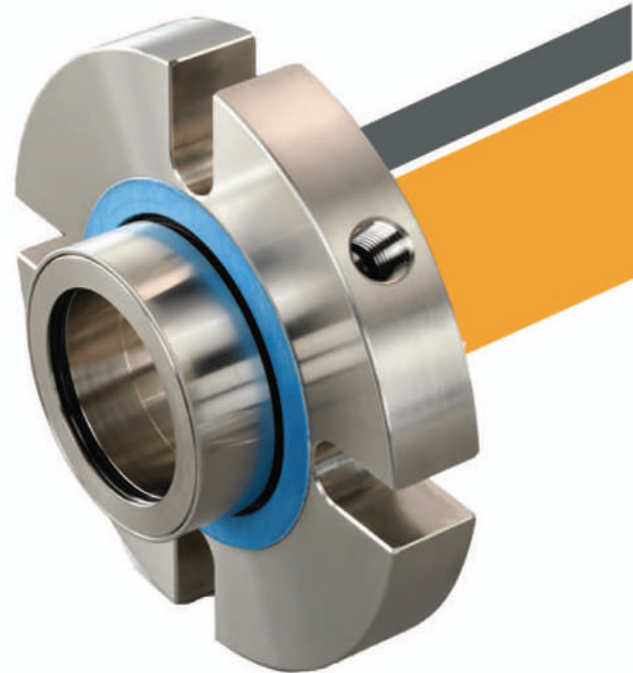
BSI-55MNC

Features

- Balanced
- Single acting
- Inside mounted
- Independent of direction of rotation

Operating Range

Shaft Diameter:	19 mm to 75 mm
Pressure:	Up to 10 bar (kg/cm ²)
Temperature:	40°C TO +180°C (-40 °F ... 356) °F
Shaft Speed:	Up to 3000 RPM



Materials

Seal Faces:	<ul style="list-style-type: none">● (Dynamic & Stationary Ring)● Carbon, Ceramic (99.5%), Silicon Carbide, Tungsten Carbide & which are suitable for fluid
Secondary Seal:	<ul style="list-style-type: none">● Viton, Silicon, Aflac, Karlez● PTFE, GFT
Hardware & Spring:	<ul style="list-style-type: none">● SS 316, SS 304● Carpenter-42● Alloy-20, Hastelloy – C



Recommended Applications

- Syrup pumps
- Food industries
- Water treatment
- Pulp & Paper industries
- General & light chemicals

Mixture & Agitator Seals

BSI-105

Features

- Dry running seal
- Outside mounted
- Balanced seal

Advantages

Simple, rugged drive design that withstands shaft movement vibration & deflection. Seal design eliminates the need of auxiliary equipment for cooling & lubricants for mixer application. It eliminates the possibility of product contamination, since there is no use barrier fluid. Can be used in high vacuum applications. Seals with bearing can be provided for vessels having greater misalignments with special arrangement.



Operating Range

Shaft Dia.:	25 to 100mm
Pressure:	Up to 1.40 MPa
Temperature:	-10 to 150°C(-14 °F ... 302) °F
Speed:	Up to 1 m/s

Materials

Seal Faces:	Carbon Vs Ceramic/Sic/TC
Secondary Seals:	Nitrile/Neoprene/Viton/PTFE
Metal Components:	SS-316



Recommended Applications

- Mixers & Agitators
- Pharmaceuticals products
- chemical industries.
- Food Products

BSI-107GL

Mixture & Agitator Seals



Features

- Single end
- Unbalanced & balanced
- Easy installation.
- Wet seal without bearing arrangement.

Advantages

Seals are factory assembled & dynamically tested cartridge units for steel, glass lined, ss mixers, agitators & vessels. These are used with non-pressurized barrier fluid preferably clean soft water because of its good heat transfer qualities. Fluids like oil, hydrocarbon, solvents etc. can also be used as buffer fluid by considering the corrosion resistance of wetted parts & compatibility with main media to be sealed. These seals are supplied with cooling water jacket, which ensure cool running of seals.

Operating Range

Shaft Dia.:	25 to 180mm
Pressure:	- 0.1 ~ 0.6 MPa (when the pressure is bigger than 0.6 MPa, the pressure balancing device is needed and its connection size can be customized)
Temperature:	- 20 ~ 150 °C (cooling tank is required if the temperature is higher than 150 °C and the installation height should be 100 mm higher than normal)
Linear Speed:	2 m/s or less

Materials

Rotary Ring Face:	SiC/Carbon
Stationary Ring Face:	CERAMIC/SiC
Elastomers:	/PTFE/FFKM
Springs:	/SS316/HC-276
Metal Parts:	SS304/SS316/SS316

Recommended Applications

- Corrosive Chemicals
- General Chemicals
- Light Hydro Carbons
- Mixers & Agitators.





Features

- Single Acting Mechanical Seal.
- Dual Directional Mechanical Seal.
- Outside Mounted Mechanical Seal.
- Reverse Balanced Design.
- Multi Spring design Mechanical Seal.

Advantages

SSI-26 Mechanical Seal are Externally Mounted Reverse Balanced Design Seal having 'O' Ring as a Secondary Sealing member. Secondary Sealing member can be changed as per Chemical Compatibility. All metal components including springs are Isolated from the Sealed, Aggressive Medium. Simple checkout method function and cleaning possibility as this Mechanical Seal located easily access outside the pump. Especially design Clamp Ring eliminate Slipping on Shaft.

Operating Range	
Shaft Dia.:	16mm to 70mm
Pressure:	Up to 8 bar
Temperature:	Upto 120°C
Speed:	RPM

Materials	
Seal Ring Faces:	Carbon and SiC
Seat Faces:	Ceramic and SiC
Elastomer:	Viton, EPDM, TTV, FEP and FFKM
MOC:	SS 316, Hast-C and Alloy – 20

Recommended Applications

- Chemical industry
- Refining technology
- Petrochemical industry
- Lubrication oil
- Light oil
- Gasoline
- Naphtha
- Water
- Process pumps



Multi Spring Seals

BSI-41B

Features

- Multi Spring
- Balanced Seal
- high-pressure

Advantages

These seals required lower stuffing box space for installation. These seals can be provided with single, double or tandem arrangement with external seal support systems & devices.



Operating Range

Shaft Diameter:	14 to 150mm
Pressure:	Up to 30 Bars
Temperature:	-50 to 280°C
Speed:	Up to 25 m/s

Materials

Seal Faces:	Carbon vs Ceramic/Sic./TC
Secondary Seals:	Viton/PTFE/GFT
Metal Components:	SS-316

Recommended Applications

- Petrochemicals,
- Petroleum refinery
- Light Hydrocarbons
- General Industrial fluids.
- Corrosive Chemicals



BS1-75

Slurry Seals



Features

- Single Coil Spring
- Axial compensation of movement 1mm
- Perfect for standardization purpose.
- Balanced

Advantages

Mechanical seal SSI-75 series are special purpose single coil spring balanced seals designed for use in media containing abrasive or solid particles.

Operating Range

Shaft Dia.:	25 to 150mm
Pressure:	Up to 15 Bars
Temperature:	-50 to 180°C
Speed:	Up to 25 m/s

Materials

Seal Faces:	Ceramic/Sic/Carbon Vs Ceramic/RB Sic. /TC
Secondary Seals:	Viton/PTFE/GFT
Metal Components:	SS-316

Recommended Applications

- paper industries
- Petrochemicals
- Petrochemicals
- Petroleum refinery



Slurry Seals

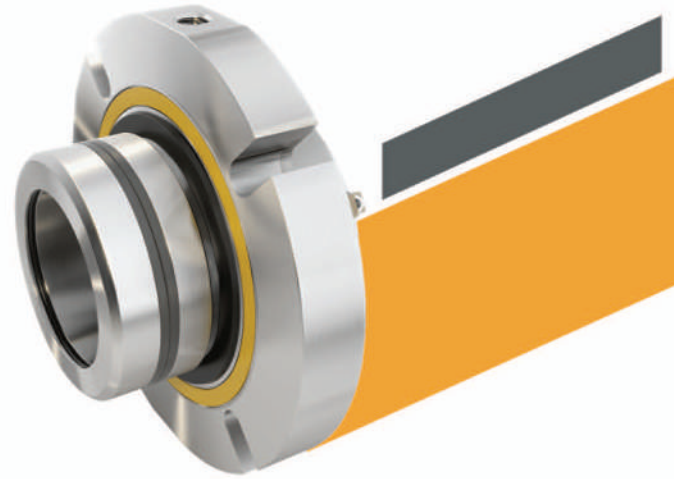
BS1-75D

Features

- Single Acting
- Inside mounted
- Standardized modular design.

Advantages

Designed to handle solids up to 14% by weight. Hydraulically balanced faces for excellent seal reliability. Springs are located outside the process. Flushing helps to lubricate or cool the seal faces from atmospheric side of mechanical seal. They are cost effective for basic application.



Operating Range

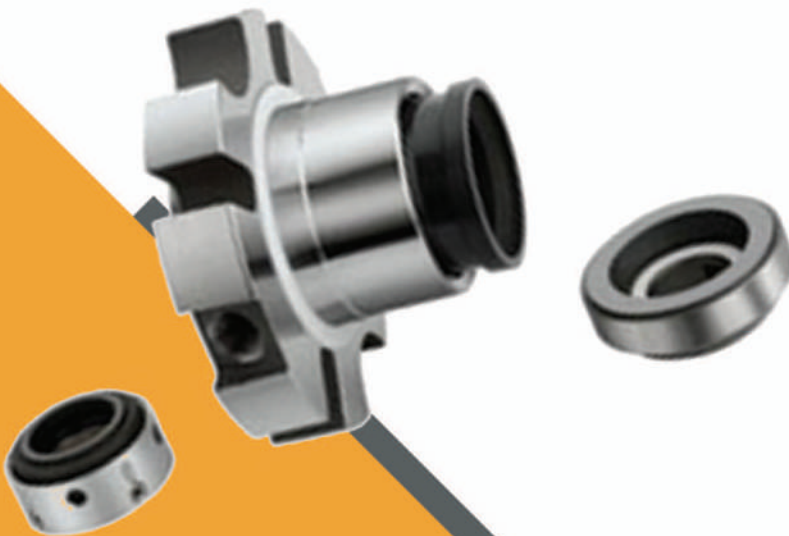
Shaft Diameter:	25mm to 80mm
Pressure:	Full Vacuum to 7 bar
Temperature:	-30 °C to 260 °C (Depending upon Elastomer)
Speed:	3000 r.p.m.

Materials

Seal Ring Faces :	SiC, Carbon and TC
Seat Faces:	SiC and TC
Elastomer:	Viton, TTV, FEP and FFKM
MOC:	SS 316

Recommended Applications

- Paper industries,
- Petrochemicals,
- Petroleum Refinery
- Centrifugal Pumps
- Equipment with Rotating Shaft
- Handling Crystallizing Slurry
- Suspended Solid Slurry
- Saturated Chemical Slurry
- General Chemical Slurry.



Contact Us

Petro Tech Seals

📞 +91 777 709 3115

✉️ petrotechseals@gmail.com

📍 Unit No 11, Rani sati marg, Malad East, Mumbai 400097.

